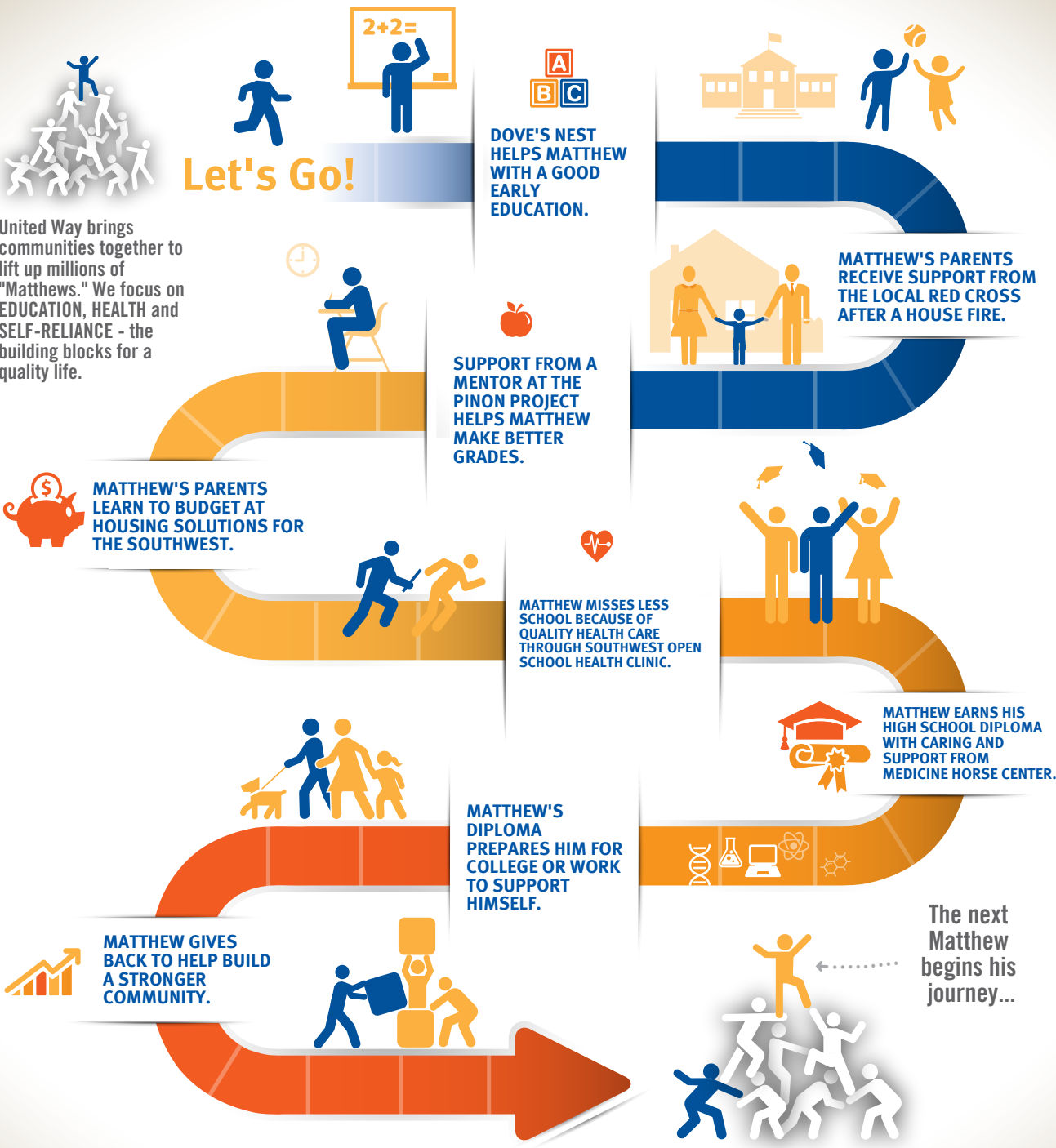


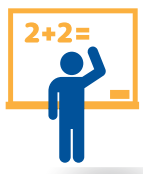
WHERE THE MONEY GOES...

Meet Matthew  Matthew is a child who wants to succeed. All he needs is an opportunity.



Let's Go!

United Way brings communities together to lift up millions of "Matthews." We focus on EDUCATION, HEALTH and SELF-RELIANCE - the building blocks for a quality life.



DOVE'S NEST HELPS MATTHEW WITH A GOOD EARLY EDUCATION.



MATTHEW'S PARENTS RECEIVE SUPPORT FROM THE LOCAL RED CROSS AFTER A HOUSE FIRE.



SUPPORT FROM A MENTOR AT THE PINON PROJECT HELPS MATTHEW MAKE BETTER GRADES.



MATTHEW'S PARENTS LEARN TO BUDGET AT HOUSING SOLUTIONS FOR THE SOUTHWEST.



MATTHEW MISSES LESS SCHOOL BECAUSE OF QUALITY HEALTH CARE THROUGH SOUTHWEST OPEN SCHOOL HEALTH CLINIC.



MATTHEW EARNS HIS HIGH SCHOOL DIPLOMA WITH CARING AND SUPPORT FROM MEDICINE HORSE CENTER.



MATTHEW'S DIPLOMA PREPARES HIM FOR COLLEGE OR WORK TO SUPPORT HIMSELF.



MATTHEW GIVES BACK TO HELP BUILD A STRONGER COMMUNITY.



The next Matthew begins his journey...



We All Win!

GIVE. ADVOCATE. VOLUNTEER.
Contact us to get started!

United Way of SW Colorado
Montezuma & Dolores Counties
Bruce Johnson
PO Box 999
Cortez, CO 81321
bruce@unitedway-swco.org
970-882-2635
unitedway-swco.org

